

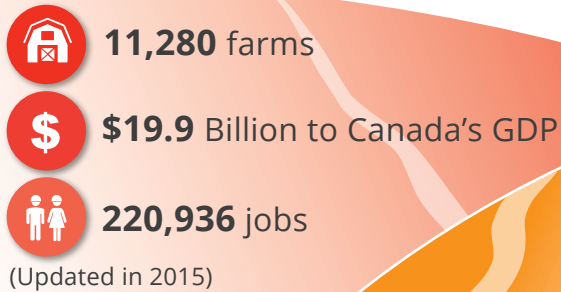
The Environmental and Socioeconomic Life Cycle Assessment of Canadian Milk Production

A ROADMAP FOR AN ONGOING COMMITMENT TOWARDS SUSTAINABLE DAIRY FARMING

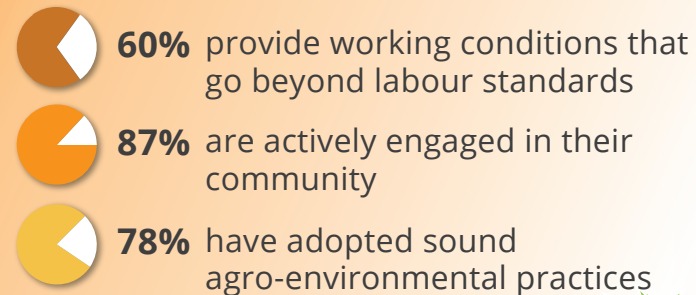
About the study

This study, conducted in 2012, is part of a research cluster that brings together universities, government and the dairy sector to improve the sustainability of milk production. The assessment is regionalized to account for geographical and regulatory differences across Canada. Results establish a benchmark to help map the way to continuous improvements.

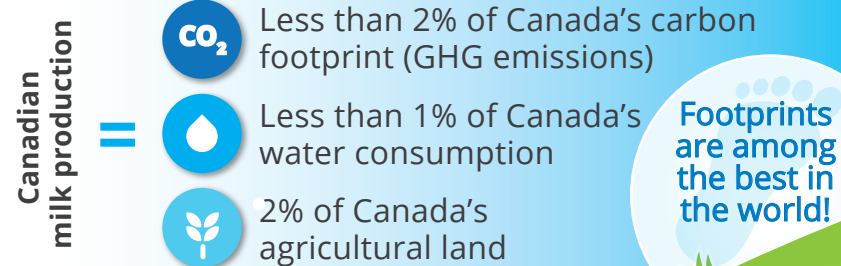
Canadian dairy farming: An engine for jobs!



Beyond economic contributions: an evaluation of dairy farmers' socioeconomic performance



A comprehensive look at impacts on ecosystems, human health and natural resources



The study establishes a benchmark for performance to help identify and encourage best practices, especially with regard to crop fertilization, feeding, animal husbandry and manure management.

In order to continue to improve the sustainability of Canadian milk production, Dairy Farmers of Canada has developed an action plan that:

- Targets areas where best management practices will lead to more sustainable production;
- Provides dairy farmers with an individual assessment tool (dairyfarmsplus.ca) they can use to identify opportunities to enhance their farm's performance;
- Assesses the performance of all dairy farms in matters relating to responsible production practices.

A study funded by:

A study conducted by: