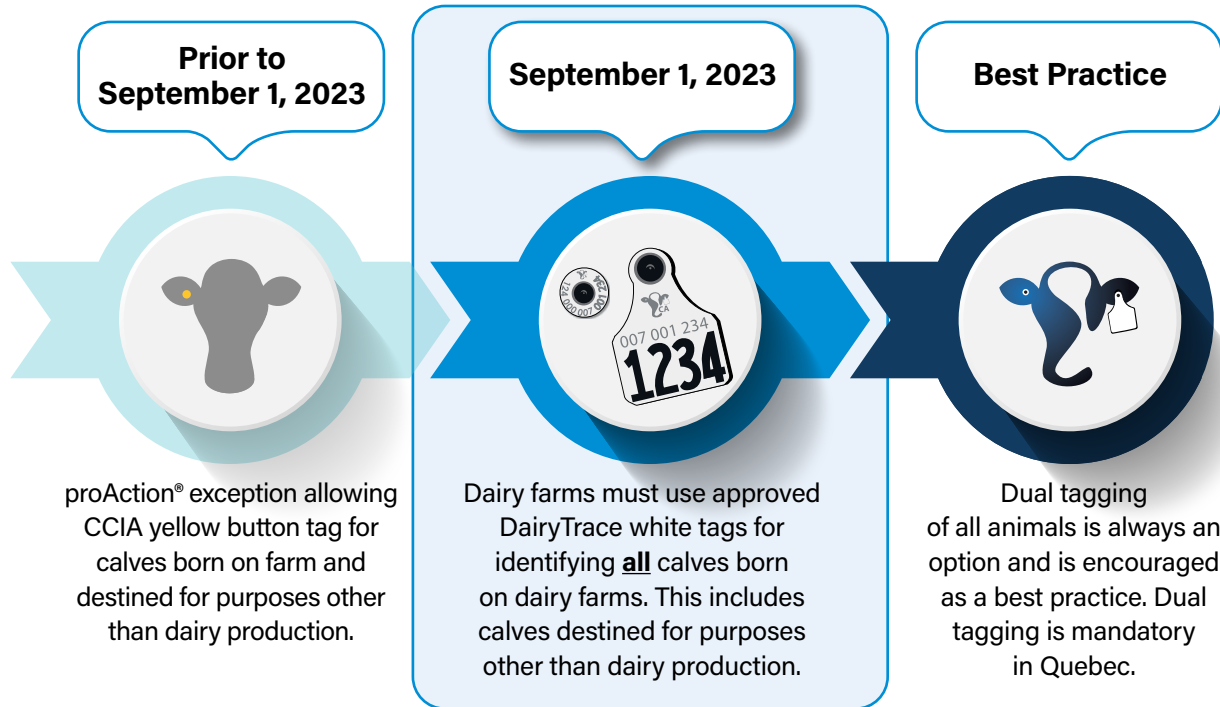


Tag Requirement Changes

Effective September 1, 2023

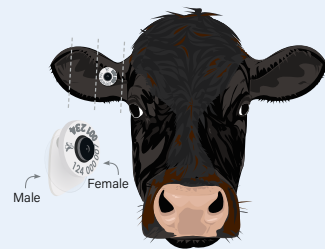
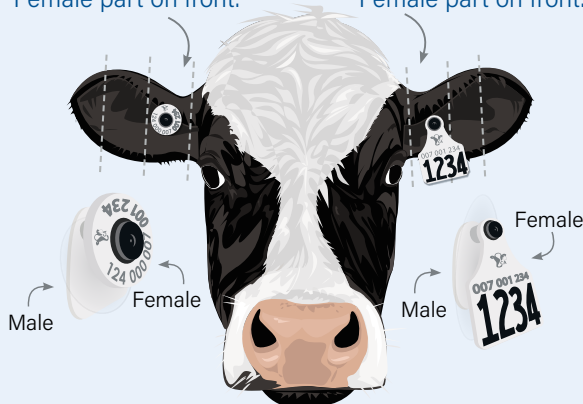


Federal regulations prohibit removal of official RFID tags, so animals currently tagged with a yellow button tag should not have their tags removed. **As a reminder, it is acceptable for animals in a dairy herd that were born before September 2017 (before dual tagging was required for dairy animals) to be identified using a yellow button tag.**

Positioning Tips

RIGHT EAR
Electronic set put on the **first third** of ear with Male part on back, Female part on front.

LEFT EAR
Visual set put on the **first third** of ear with Male part on back, Female part on front.



While dual tagging is encouraged, DairyTrace offers a white single button RFID tag that may be used to identify calves born on farm and destined for purposes other than dairy production.*

*not applicable in Québec



As per federal requirement, the RFID button must be front facing.

Have questions? We've got answers.

Why use white tags?

Using approved dairy tags results in more complete traceability data for the dairy sector. A traceability system is designed to protect dairy farmers and is much more effective when tag information and movements on and off dairy operations or other premises are fully traceable, which is not possible when yellow tags are used.

The dairy and beef industries have different traceability databases: DairyTrace and the Canadian Livestock Tracking System (CLTS) of Canadian Cattle Identification Agency (CCIA). When dairy farmers use white dairy tags, all events reported on these tags, from birth to tag retirement, go to DairyTrace. Use of white dairy tags will ensure all animals born on a dairy farm are fully traceable through DairyTrace. When dairy farmers use yellow button tags, all reported events after the animals leave the farm go to the CLTS and are not captured by DairyTrace.

How will this benefit farmers?

Having the most complete information on dairy animals from birth to end of life makes effective and rapid traceback possible in an animal health emergency, protecting farms and the dairy industry.

Keeping information from calves born on a dairy farm in the DairyTrace system provides the potential to gather more information on those animals as they move through the value chain, from birth to end of life. More information will lead to a better understanding of these animals and is the foundation for potential future value-added opportunities for dairy farmers.

Buyers may be willing to pay a premium if they receive records from the dairy farmer with age, weight and other information about the calves. **Watch this short video** for more information.

Is this part of proAction? How will this be implemented?

Starting September 1, 2023, this will be a requirement in proAction's Traceability module and will be verified by proAction validators as part of the on-farm audit.

Will using white button tags cost more?

The cost of purchasing the white single button RFID tags is competitive with the yellow button tags.

An advantage of using only white DairyTrace tags is they can all be ordered via DairyTrace Customer Services.

Based on an independent analysis of auction mart data available in various provinces, there is no evidence of bias in market price received for calves with white single button tags compared to those with yellow button tags.

Want more information?

If you have any questions, contact DairyTrace Customer Services or your proAction provincial coordinator.

DairyTrace Customer Services: 1-866-55-TRACE (1-866-558-7223) or info@DairyTrace.ca.

Find your proAction provincial coordinator: dairytrace.ca/traceability/how-it-works/.